

Canine EGFR/HER1/ErbB1 (His Tag) recombinant protein



Catalog Number: 504822

General Information

Protein Construction

A DNA sequence encoding the canine EGFR (XP_533073.3) (Met1-Ser618) was expressed with a C-terminal polyhistidine tag.

Organism

Canine

Expression Host

Baculovirus-Insect Cells

QC Testing

Activity

Measured by its binding ability in a functional ELISA.

Immobilized canine EGFR-His at 10 µg/ml (100 µl/well) can bind biotinylated canine His-EGF (Cat:500258), The EC₅₀ of biotinylated canine His-EGF (Cat:500258) is 0.16-0.36 µg/ml

Purity

> 90 % as determined by SDS-PAGE

Endotoxin

< 1.0 EU per µg of the protein as determined by the LAL method

Stability

Samples are stable for up to twelve months from date of receipt at -70°C

Predicted N terminal

Met

Molecular Mass

The recombinant canine EGFR comprises 629 amino acids and has a predicted molecular mass of 69.8 kDa. The apparent molecular mass of the protein is approximately 87.2 kDa in SDS-PAGE under reducing conditions.

Formulation

Lyophilized from sterile 20 mM Tris, 500 mM NaCl, 10 % glycerol, pH 7.0.

1. 5 % trehalose and mannitol are added as protectants before lyophilization.
2. Please contact us for any concerns or special requirements.

Usage Guide

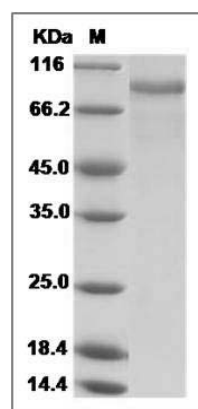
Storage

Store it under sterile conditions at -20°C to -80°C. It is recommended that the protein be aliquoted for optimal storage. Avoid repeated freeze-thaw cycles.

Reconstitution

Adding sterile water, prepare a stock solution of 0.25 mg/ml. Concentration is measured by UV-Vis.

SDS-PAGE



Canine EGFR / HER1 / ErbB1 Protein (His Tag)
SDS-PAGE