

General Information

Protein Construction

A DNA sequence encoding the rhesus IL8 (NP_001028137.1)(Ala23-Pro101) was expressed and purified with an initial Met.

Organism

Rhesus

Expression Host

E. coli

QC Testing

Activity

Measured by its binding ability in a functional ELISA.

Immobilized Rhesus IL8 (Cat:504784) at 10 µg/mL (100 µl/well) can bind biotinylated human RELA-GST (Cat:501219). The EC₅₀ of biotinylated human RELA-GST (Cat:501219) is 0.5-1.2 µg/mL.

Purity

> 95 % as determined by SDS-PAGE

Endotoxin

Please contact us for more information.

Stability

Samples are stable for up to twelve months from date of receipt at -70°C

Predicted N terminal

Met

Molecular Mass

The recombinant rhesus IL8 consists of 80 amino acids and has a calculated molecular mass of 9.3 KDa.

Formulation

Lyophilized from sterile 50mM Tris, 250mM NaCl, pH 7.5.

1. 5 % trehalose and mannitol are added as protectants before lyophilization.
2. Please contact us for any concerns or special requirements.

Usage Guide

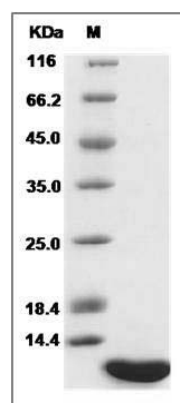
Storage

Store it under sterile conditions at -20°C to -80°C. It is recommended that the protein be aliquoted for optimal storage. Avoid repeated freeze-thaw cycles.

Reconstitution

Adding sterile water, prepare a stock solution of 0.25 mg/ml. Concentration is measured by UV-Vis.

SDS-PAGE



Cynomolgus IL-8 / CXCL8 Protein SDS-PAGE