

# Rat CLEC14A (Fc Tag) recombinant protein



Catalog Number: 504766

## General Information

### Protein Construction

A DNA sequence encoding the rat CLEC14A (Met1-Thr398) was expressed with the Fc region of human IgG1 at the C-terminus.

### Organism

Rat

### Expression Host

Human Cells

## QC Testing

### Purity

(75.4+12.7) % as determined by SDS-PAGE

### Endotoxin

< 1.0 EU per  $\mu\text{g}$  of the protein as determined by the LAL method

### Stability

Samples are stable for up to twelve months from date of receipt at  $-70^{\circ}\text{C}$

### Predicted N terminal

Glu 22

### Molecular Mass

The recombinant rat CLEC14A/Fc is a disulfide-linked homodimer. The reduced monomer comprises 618 amino acids and has a predicted molecular mass of 67.6 kDa. The apparent

molecular mass of the protein is approximately 110 and 37 kDa in SDS-PAGE under reducing conditions.

### Formulation

Lyophilized from sterile PBS, pH 7.4

1. 5 % trehalose and mannitol are added as protectants before lyophilization.

2. Please contact us for any concerns or special requirements.

## Usage Guide

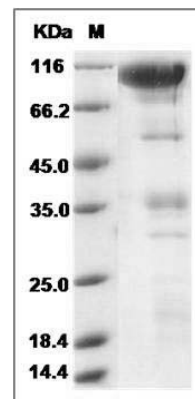
### Storage

Store it under sterile conditions at  $-20^{\circ}\text{C}$  to  $-80^{\circ}\text{C}$ . It is recommended that the protein be aliquoted for optimal storage. Avoid repeated freeze-thaw cycles.

### Reconstitution

Adding sterile water, prepare a stock solution of 0.25 mg/ml. Concentration is measured by UV-Vis.

### SDS-PAGE



Rat CLEC14A / EGFR-5 Protein (Fc Tag) SDS-PAGE