

General Information

Protein Construction

A DNA sequence encoding the mature form of human IL7 (Asp26-His177) was expressed with a N-terminal Met.

Organism

Human

Expression Host

E. coli

QC Testing

Activity

1. Measured by its binding ability in a functional ELISA.
Immobilized human IL7 at 10 µg/ml (100 µl/well) can bind human IL7Ra-Fch (Cat:503420), The EC₅₀ of human IL7Ra-Fch (Cat:503420) is 15.2-35.6 ng/ml.
2. Measured in a cell proliferation assay using antibody against CD3-activated human peripheral blood lymphocytes (PBL). The ED₅₀ for this effect is typically 1.2-4.7 ng/mL.

Purity

> 90 % as determined by SDS-PAGE

Endotoxin

Please contact us for more information.

Stability

Samples are stable for up to twelve months from date of receipt at -70°C

Predicted N terminal

Met

Molecular Mass

The recombinant human IL7 consists of 153 amino acids and predicts a molecular mass of 17.5 KDa. It migrates as an approximately 19 KDa band in SDS-PAGE under reducing conditions.

Formulation

Lyophilized from sterile 25mM NaH₂PO₄, 400mM NaCl, pH 6.8.

1. 5 % trehalose and mannitol are added as protectants before lyophilization.
2. Please contact us for any concerns or special requirements.

Usage Guide

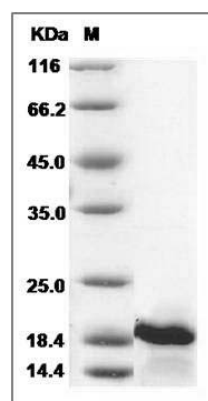
Storage

Store it under sterile conditions at -20°C to -80°C. It is recommended that the protein be aliquoted for optimal storage. Avoid repeated freeze-thaw cycles.

Reconstitution

Adding sterile water, prepare a stock solution of 0.25 mg/ml. Concentration is measured by UV-Vis.

SDS-PAGE



Human IL7 / interleukin 7 Protein SDS-PAGE