

General Information

Protein Construction

A DNA sequence encoding the mature form of human FGF6 (Gly41-Ile208) was expressed with a N-terminal Met.

Organism

Human

Expression Host

E. coli

QC Testing

Activity

Measured in a cell proliferation assay using BALB/c 3T3 mouse fibroblasts. The ED₅₀ for this effect is typically 0.1-0.6 ng/mL.

Purity

> 95 % as determined by SDS-PAGE

Endotoxin

Please contact us for more information.

Stability

Samples are stable for up to twelve months from date of receipt at -70°C

Predicted N terminal

Met

Molecular Mass

The recombinant human FGF6 consists of 169 amino acids and predicts a molecular mass of 18.9 KDa. It migrates as an approximately 19 KDa band in SDS-PAGE under reducing conditions.

Formulation

Lyophilized from sterile PBS pH 7.4

1. 5 % trehalose and mannitol are added as protectants before lyophilization.
2. Please contact us for any concerns or special requirements.

Usage Guide

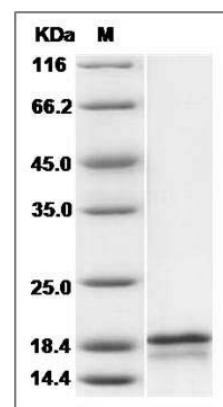
Storage

Store it under sterile conditions at -20°C to -80°C. It is recommended that the protein be aliquoted for optimal storage. Avoid repeated freeze-thaw cycles.

Reconstitution

Adding sterile water, prepare a stock solution of 0.25 mg/ml. Concentration is measured by UV-Vis.

SDS-PAGE



Human FGF6 / FGF-6 Protein SDS-PAGE