

General Information

Protein Construction

A DNA sequence encoding the rat IL6 (Phe25-Thr211) was expressed and purified with an initial Met.

Organism

Rat

Expression Host

E. coli

QC Testing

Activity

Measured in a cell proliferation assay using T1165 mouse plasmacytoma cells. The ED₅₀ for this effect is typically 1-6 ng/ml.

Purity

> 90 % as determined by SDS-PAGE

Endotoxin

Please contact us for more information.

Stability

Samples are stable for up to twelve months from date of receipt at -70°C

Predicted N terminal

Met

Molecular Mass

The recombinant rat IL6 consists of 188 amino

acids and has a predicted molecular mass of 21.9 kDa. As a result of glycosylation, the apparent molecular mass of the recombinant protein is approximately 22 kDa in SDS-PAGE under reducing conditions.

Formulation

Lyophilized from sterile 40% acetonitrile, 0.1% TFA

1. 5 % trehalose and mannitol are added as protectants before lyophilization.
2. Please contact us for any concerns or special requirements.

Usage Guide

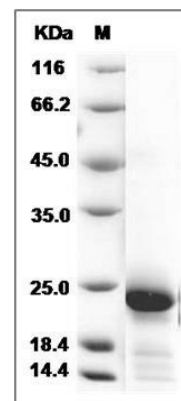
Storage

Store it under sterile conditions at -20°C to -80°C. It is recommended that the protein be aliquoted for optimal storage. Avoid repeated freeze-thaw cycles.

Reconstitution

Adding sterile water, prepare a stock solution of 0.25 mg/ml. Concentration is measured by UV-Vis.

SDS-PAGE



Rat IL6 / Interleukin-6 Protein SDS-PAGE