

Human EPHA3/Eph Receptor A3 (His Tag) recombinant protein



Catalog Number: 504736

General Information

Protein Construction

A DNA sequence encoding the human EPHA3 (Met1-Gln541) was expressed with a polyhistidine tag at the C-terminus.

Organism

Human

Expression Host

Human Cells

QC Testing

Activity

Measured by its binding ability in a functional ELISA.

Immobilized human EPHA3-His at 10 µg/ml (100 µl/well) can bind human EphrinA5-Fc (Cat:504531), The EC₅₀ of human EphrinA5-Fc (Cat:504531) is 6.2-14.6 ng/ml.

Purity

> 95 % as determined by SDS-PAGE

Endotoxin

< 1.0 EU per µg of the protein as determined by the LAL method

Stability

Samples are stable for up to twelve months from date of receipt at -70°C

Predicted N terminal

Glu 21

Molecular Mass

The recombinant human EPHA3 consists of 532 amino acids and predicts a molecular mass of 60.3 KDa. It migrates as an approximately 65-70 KDa band in SDS-PAGE under reducing conditions.

Formulation

Lyophilized from sterile PBS, pH 7.4

1. 5 % trehalose and mannitol are added as protectants before lyophilization.
2. Please contact us for any concerns or special requirements.

Usage Guide

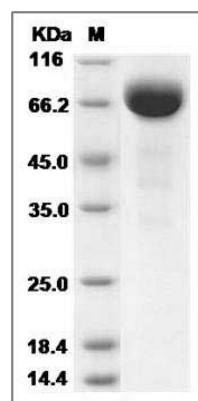
Storage

Store it under sterile conditions at -20°C to -80°C. It is recommended that the protein be aliquoted for optimal storage. Avoid repeated freeze-thaw cycles.

Reconstitution

Adding sterile water, prepare a stock solution of 0.25 mg/ml. Concentration is measured by UV-Vis.

SDS-PAGE



Human EphA3 Protein (His Tag) SDS-PAGE