

Mouse BTLA (Fc Tag) recombinant protein



Catalog Number: 504714

General Information

Protein Construction

A DNA sequence encoding the mouse BTLA (Met1-Gly176) was expressed, fused with the Fc region of human IgG1 at the C-terminus.

Organism

Mouse

Expression Host

Human Cells

QC Testing

Activity

Immobilized mouse BTLA-Fc at 10 µg/ml (100 µl/well) can bind biotinylated mouse HVEM-Fch (Cat:503760), The EC₅₀ of biotinylated mouse HVEM-Fch (Cat:503760) is 15.7-36.7 ng/ml.

Purity

> 90 % as determined by SDS-PAGE

Endotoxin

< 1.0 EU per µg of the protein as determined by the LAL method

Stability

Samples are stable for up to twelve months from date of receipt at -70°C

Predicted N terminal

Glu 30

Molecular Mass

The recombinant mouse BTLA /Fc is a disulfide-linked homodimer. The reduced monomer comprises 388 amino acids and has a predicted molecular mass of 437 kDa. The apparent molecular mass of the protein is approximately 57-62 kDa in SDS-PAGE under reducing conditions due to glycosylation.

Formulation

Lyophilized from sterile PBS, pH 7.4

1. 5 % trehalose and mannitol are added as protectants before lyophilization.

2. Please contact us for any concerns or special requirements.

Usage Guide

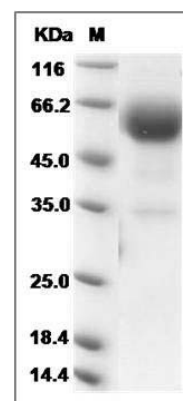
Storage

Store it under sterile conditions at -20°C to -80°C. It is recommended that the protein be aliquoted for optimal storage. Avoid repeated freeze-thaw cycles.

Reconstitution

Adding sterile water, prepare a stock solution of 0.25 mg/ml. Concentration is measured by UV-Vis.

SDS-PAGE



Mouse BTLA Protein (Fc Tag) SDS-PAGE