

General Information

Protein Construction

A DNA sequence encoding the mature form of human SULT1A3 (P50224-1) (Glu2-Leu295) was expressed with a polyhistidine tag at the N-terminus.

Organism

Human

Expression Host

E. coli

QC Testing

Activity

Measured by its ability to transfer sulfate from PAPS to 1-Naphthol.
The specific activity is > 150 pmoles/min/μg.

Purity

> 94 % as determined by SDS-PAGE

Endotoxin

Please contact us for more information.

Stability

Samples are stable for up to twelve months from date of receipt at -70°C

Predicted N terminal

Met

Molecular Mass

The recombinant human SULT1A3 consists of 301 amino acids and predicts a molecular mass of 30.5 KDa. It migrates as an approximately 34 KDa band in SDS-PAGE under reducing conditions.

Formulation

Lyophilized from sterile 20mM Tris, 500mM NaCl, pH 7.4

1. 5 % trehalose and mannitol are added as protectants before lyophilization.
2. Please contact us for any concerns or special requirements.

Usage Guide

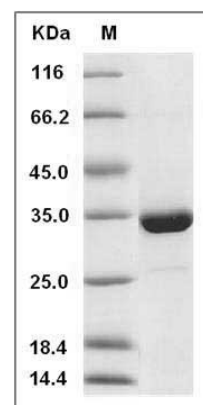
Storage

Store it under sterile conditions at -20°C to -80°C. It is recommended that the protein be aliquoted for optimal storage. Avoid repeated freeze-thaw cycles.

Reconstitution

Adding sterile water, prepare a stock solution of 0.25 mg/ml. Concentration is measured by UV-Vis.

SDS-PAGE



Human SULT1A3 Protein (His Tag) SDS-PAGE