

Human BCL2 / Bcl-2 (His Tag) recombinant protein



Catalog Number: 504659

General Information

Protein Construction

A DNA sequence encoding the human BCL2 isoform 1 (P10415-) (Met 1-Asp 211) was expressed, with a polyhistidine tag at the C-terminus.

Organism

Human

Expression Host

E. coli

QC Testing

Activity

Measured by its binding ability in a functional ELISA.

Immobilized human BCL2-His at 10 µg/ml (100 µl/well) can bind biotinylated mouse BCL2L1-His (Cat:500094), The EC₅₀ of biotinylated mouse BCL2L1-His (Cat:500094) is 0.07-0.15 µg/ml.

Purity

> 90 % as determined by SDS-PAGE

Endotoxin

Please contact us for more information.

Stability

Samples are stable for up to twelve months from date of receipt at -70°C

Predicted N terminal

Met 1

Molecular Mass

The recombinant human BCL2 consisting of 221 amino acids and has a calculated molecular mass of 24.7 kDa. It migrates as an approximately 32 KDa band in SDS-PAGE under reducing conditions.

Formulation

Lyophilized from sterile 50mM Tris, 20% glycerol, 100mM Arg, pH 8.5

1. 5 % trehalose and mannitol are added as protectants before lyophilization.

2. Please contact us for any concerns or special requirements.

Usage Guide

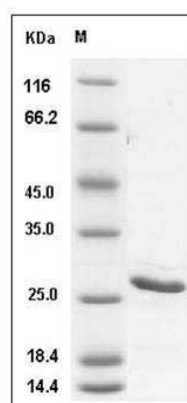
Storage

Store it under sterile conditions at -20°C to -80°C. It is recommended that the protein be aliquoted for optimal storage. Avoid repeated freeze-thaw cycles.

Reconstitution

Adding sterile water, prepare a stock solution of 0.25 mg/ml. Concentration is measured by UV-Vis.

SDS-PAGE



Human BCL2 / Bcl-2 Protein (His Tag) SDS-PAGE