

Rhesus CD3e/CD3 epsilon (Fc Tag) recombinant protein



Catalog Number: 504658

General Information

Protein Construction

A DNA sequence encoding the rhesus CD3E (XP_001097204.1) CD3E extracellular domain (Met 1-Asp 117) was fused with the Fc region of human IgG1 at the C-terminus.

Organism

Rhesus

Expression Host

Human Cells

QC Testing

Purity

> 96 % as determined by SDS-PAGE

Endotoxin

< 1.0 EU per μ g of the protein as determined by the LAL method

Stability

Samples are stable for up to twelve months from date of receipt at -70°C

Predicted N terminal

Gln 22

Molecular Mass

The recombinant rhesus CD3E consists of 337 amino acids and has a calculated molecular mass

of 38 kDa.

Formulation

Lyophilized from sterile PBS, pH 7.4

1. 5 % trehalose and mannitol are added as protectants before lyophilization.

2. Please contact us for any concerns or special requirements.

Usage Guide

Storage

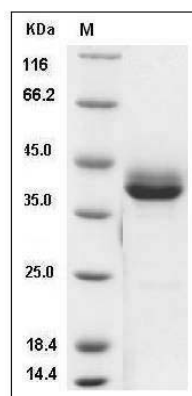
Store it under sterile conditions at -20°C to -80°C.

It is recommended that the protein be aliquoted for optimal storage. Avoid repeated freeze-thaw cycles.

Reconstitution

Adding sterile water, prepare a stock solution of 0.25 mg/ml. Concentration is measured by UV-Vis.

SDS-PAGE



Cynomolgus CD3e / CD3 epsilon Protein (Fc Tag)

SDS-PAGE