

# Human UBE2W (His Tag) recombinant protein



Catalog Number: 504651

## General Information

### Protein Construction

A DNA sequence encoding the human UBE2W (Q96B02-12) (Met 1-Cys 151) was expressed, with a polyhistidine tag at the N-terminus.

### Organism

Human

### Expression Host

E. coli

## QC Testing

### Purity

> 97 % as determined by SDS-PAGE

### Endotoxin

Please contact us for more information.

### Stability

Samples are stable for up to twelve months from date of receipt at -70°C

### Predicted N terminal

Met

### Molecular Mass

The recombinant human UBE2W comprises 166 amino acids and has a predicted molecular mass of 19.2 kDa.. It migrates as an approximately 18kDa band in SDS-PAGE under reducing

conditions.

### Formulation

Lyophilized from sterile 20mM Tris, 100mM Arg.0.1% Brij35, pH 8.5

1. 5 % trehalose and mannitol are added as protectants before lyophilization.

2. Please contact us for any concerns or special requirements.

## Usage Guide

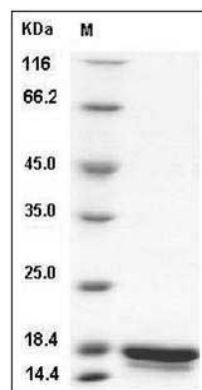
### Storage

Store it under sterile conditions at -20°C to -80°C. It is recommended that the protein be aliquoted for optimal storage. Avoid repeated freeze-thaw cycles.

### Reconstitution

Adding sterile water, prepare a stock solution of 0.25 mg/ml. Concentration is measured by UV-Vis.

### SDS-PAGE



Human UBE2W Protein (His Tag) SDS-PAGE