

General Information

Gene Name Synonym

T-cell receptor T3 delta chain; CD antigen CD3d

Protein Construction

A DNA sequence encoding the extracellular domain (Met 1-Ala 105) of human CD3D (P04234) was fused with the C-terminal flag-tagged Fc region of human IgG1 at the C-terminus, constructed the plasmid 1; A DNA sequence encoding the extracellular domain (Met 1-Asp 126) of human CD3E (P07766) was fused with the C-terminal His-tagged Fc region of human IgG1 at the C-terminus, constructed the plasmid 2. The two plasmids were co-expressed and the human CD3D/CD3E heterodimer was purified.

Organism

Human

Expression Host

Human Cells

QC Testing

Activity

Measured by its binding ability in a functional ELISA.

Immobilized human CD3D & CD3E Heterodimer Protein (Cat:CT026-H0323H) at 10 µg/ml (100 µl/well) can bind OKT3-mIgG2a. The EC₅₀ of OKT3-mIgG2a is 0.07-0.17 µg/ml.

Purity

> 90 % as determined by SDS-PAGE

Endotoxin

< 1.0 EU per µg of the protein as determined by the LAL method

Stability

Samples are stable for up to twelve months from date of receipt at -70°C

Predicted N terminal

Phe 22 & Asp 23

Molecular Mass

The recombinant heterodimer of human CD3D/CD3E comprises 670 (333+337) amino acids and has a calculated molecular mass of 77.5 (37.5+40) kDa. As a result of glycosylation, the apparent molecular mass of human CD3D/CD3E heterodimer is approximately 45-50 kDa in SDS-PAGE under reducing conditions.

Formulation

Lyophilized from sterile PBS, pH 7.4

1. 5 % trehalose and mannitol are added as protectants before lyophilization.

2. Please contact us for any concerns or special requirements.

Usage Guide

Storage

Store it under sterile conditions at -20°C to -80°C. It is recommended that the protein be aliquoted for optimal storage. Avoid repeated freeze-thaw cycles.

Reconstitution

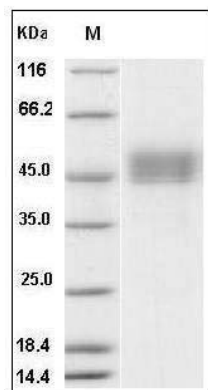
Adding sterile water, prepare a stock solution of 0.25 mg/ml. Concentration is measured by UV-Vis.

SDS-PAGE

Human CD3D & CD3E recombinant protein



Catalog Number: 504646



Human CD3D & CD3E Heterodimer Protein SDS-PAGE