

# Rhesus HER3/ErbB3 (His Tag) recombinant protein



Catalog Number: 504642

## General Information

### Protein Construction

A DNA sequence encoding the Rhesus (Macaca mulatta) ErbB3 (XP\_001113953.2) extracellular domain (Met 1-Thr 643) was fused with a polyhistidine tag at the C-terminus.

### Organism

Rhesus

### Expression Host

Human Cells

## QC Testing

### Activity

1. Measured by its binding ability in a functional ELISA.
2. Immobilized Rhesus ErbB3 at 2 µg/mL (100 µl/well) can bind human NRG1 (isoform Beta1), The EC<sub>50</sub> of human NRG1 (isoform Beta1) is 0.58 µg/mL.

### Purity

> 92 % as determined by SDS-PAGE

### Endotoxin

< 1.0 EU per µg of the protein as determined by the LAL method

### Stability

Samples are stable for up to twelve months from date of receipt at -70°C

### Predicted N terminal

Ser 20

## Molecular Mass

The recombinant Rhesus ErbB3 consists of 635 amino acids and predicts a molecular mass of 70.1 kDa. As a result of glycosylation, rhesus ErbB3 migrates as an approximately 100 kDa band in SDS-PAGE under reducing conditions.

## Formulation

Lyophilized from sterile PBS, pH 7.4

1. 5 % trehalose and mannitol are added as protectants before lyophilization.

2. Please contact us for any concerns or special requirements.

## Usage Guide

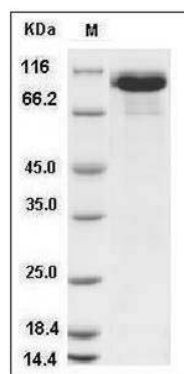
### Storage

Store it under sterile conditions at -20°C to -80°C. It is recommended that the protein be aliquoted for optimal storage. Avoid repeated freeze-thaw cycles.

### Reconstitution

Adding sterile water, prepare a stock solution of 0.25 mg/ml. Concentration is measured by UV-Vis.

## SDS-PAGE



Rhesus HER3 / ErbB3 Protein (His Tag) SDS-PAGE