

Rhesus CXCL12 / SDF-1 beta (Fc Tag) recombinant protein



Catalog Number: 504618

General Information

Protein Construction

A DNA sequence encoding the rhesus CXCL12 (NP_001028106.1) (Met 1-Lys 89) was fused with the Fc region of human IgG1 at the C-terminus.

Organism

Rhesus

Expression Host

Human Cells

QC Testing

Activity

Measured by its ability to bind biotinylated recombinant human DPPIV in a functional ELISA.

Purity

> 95 % as determined by SDS-PAGE

Endotoxin

< 1.0 EU per μg of the protein as determined by the LAL method

Stability

Samples are stable for up to twelve months from date of receipt at -70°C

Predicted N terminal

Lys 23

Molecular Mass

The recombinant rhesus CXCL12 consists of 309 amino acids and has a calculated molecular mass of 34.8 kDa.

Formulation

Lyophilized from sterile PBS, pH 7.4

1. 5 % trehalose and mannitol are added as protectants before lyophilization.

2. Please contact us for any concerns or special requirements.

Usage Guide

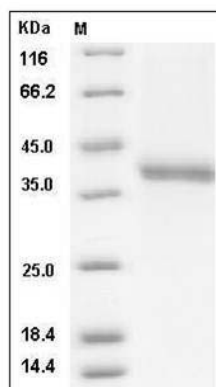
Storage

Store it under sterile conditions at -20°C to -80°C . It is recommended that the protein be aliquoted for optimal storage. Avoid repeated freeze-thaw cycles.

Reconstitution

Adding sterile water, prepare a stock solution of 0.25 mg/ml. Concentration is measured by UV-Vis.

SDS-PAGE



Cynomolgus CXCL12 / SDF-1 Protein (Fc Tag)
SDS-PAGE