

# Rhesus HER2/ErbB2 (Fc Tag) recombinant protein



Catalog Number: 504595

## General Information

### Protein Construction

A DNA sequence encoding the Rhesus ErbB2 (XP\_001090430.1) extracellular domain (Met 1-Thr 652) was fused with the Fc region of human IgG1 at the C-terminus.

### Organism

Rhesus

### Expression Host

Human Cells

## QC Testing

### Activity

Measured by its binding ability in a functional ELISA. Immobilized rhesus Erbb2-Fc at 2.5 µg/ml (100 µl/well) can bind Herceptin with a linear ranger of 6.4-160 ng/ml.

### Purity

> 90 % as determined by SDS-PAGE

### Endotoxin

< 1.0 EU per µg of the protein as determined by the LAL method

### Stability

Samples are stable for up to twelve months from date of receipt at -70°C

### Predicted N terminal

Gln 24

### Molecular Mass

The recombinant Rhesus ErbB2/Fc chimera is a disulfide-linked homodimer. The reduced monomer consists of 870 amino acids and predicts a molecular mass of 96.3 kDa. As a result of glycosylation, rhesus ErbB2/Fc monomer migrates as an approximately 130 kDa band in SDS-PAGE under reducing conditions.

### Formulation

Lyophilized from sterile PBS, pH 7.4

1. 5 % trehalose and mannitol are added as protectants before lyophilization.

2. Please contact us for any concerns or special requirements.

## Usage Guide

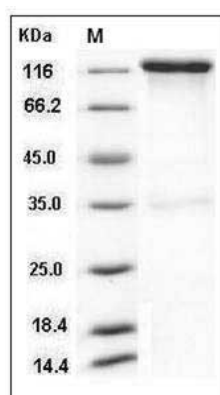
### Storage

Store it under sterile conditions at -20°C to -80°C. It is recommended that the protein be aliquoted for optimal storage. Avoid repeated freeze-thaw cycles.

### Reconstitution

Adding sterile water, prepare a stock solution of 0.25 mg/ml. Concentration is measured by UV-Vis.

### SDS-PAGE



Rhesus HER2 / ErbB2 Protein (Fc Tag) SDS-PAGE