

Human PRAC/C17orf92 (His & SUMO Tag) recombinant protein



Catalog Number: 504566

General Information

Protein Construction

A DNA sequence encoding the human PRAC (NP_115767.1) (Met1-Phe57) was expressed with a N-terminal polyhistidine-tagged SUMO tag at the N-terminus.

Organism

Human

Expression Host

E. coli

QC Testing

Purity

> 85 % as determined by SDS-PAGE

Endotoxin

Please contact us for more information.

Stability

Samples are stable for up to twelve months from date of receipt at -70°C

Predicted N terminal

His

Molecular Mass

The recombinant human PRAC consists of 168 amino acids and predicts a molecular mass of 18.8 KDa. It migrates as an approximately 25 KDa band

in SDS-PAGE under reducing conditions.

Formulation

Lyophilized from sterile PBS, pH 7.4.

1. 5 % trehalose and mannitol are added as protectants before lyophilization.

2. Please contact us for any concerns or special requirements.

Usage Guide

Storage

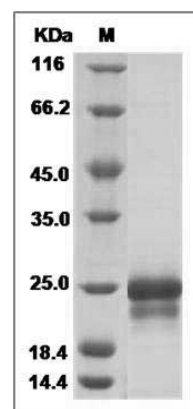
Store it under sterile conditions at -20°C to -80°C.

It is recommended that the protein be aliquoted for optimal storage. Avoid repeated freeze-thaw cycles.

Reconstitution

Adding sterile water, prepare a stock solution of 0.25 mg/ml. Concentration is measured by UV-Vis.

SDS-PAGE



Human PRAC Protein (His & SUMO Tag) SDS-PAGE