

General Information

Protein Construction

A DNA sequence encoding the native human HIST1H3A (P6843) (Met 1-Ala 136) was expressed.

Organism

Human

Expression Host

E. coli

QC Testing

Purity

> 95 % as determined by SDS-PAGE

Endotoxin

Please contact us for more information.

Stability

Samples are stable for up to twelve months from date of receipt at -70°C

Predicted N terminal

Met

Molecular Mass

The recombinant human HIST1H3A consisting of 136 amino acids and has a predicted molecular mass of 15.5 kDa as estimated in SDS-PAGE under

reducing conditions.

Formulation

Lyophilized from sterile 2mM β -Mercaptoethanol
1. 5 % trehalose and mannitol are added as protectants before lyophilization.
2. Please contact us for any concerns or special requirements.

Usage Guide

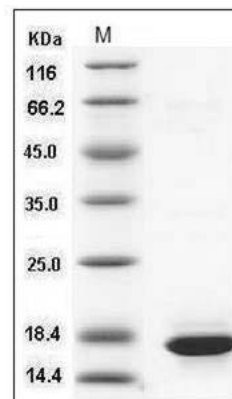
Storage

Store it under sterile conditions at -20°C to -80°C. It is recommended that the protein be aliquoted for optimal storage. Avoid repeated freeze-thaw cycles.

Reconstitution

Adding sterile water, prepare a stock solution of 0.25 mg/ml. Concentration is measured by UV-Vis.

SDS-PAGE



Human Histone H3.1 / HIST1H3A / H3FA Protein
SDS-PAGE