

# Rhesus DKK-1 (256 Asn/Gln, Fc Tag) recombinant protein



Catalog Number: 504548

## General Information

### Protein Construction

A DNA sequence encoding the rhesus DKK1 (XP\_001098844.1) precursor (Met 1-His 266) (256Asn/Gln) was fused with the Fc region of mouse IgG1 at the C-terminus via a peptide linker.

### Organism

Rhesus

### Expression Host

Human Cells

## QC Testing

### Purity

> 90 % as determined by SDS-PAGE

### Endotoxin

< 1.0 EU per  $\mu\text{g}$  of the protein as determined by the LAL method

### Stability

Samples are stable for up to twelve months from date of receipt at  $-70^{\circ}\text{C}$

### Predicted N terminal

Thr 32

### Molecular Mass

The recombinant rhesus DKK1/mFc chimera is a disulfide-linked homodimer. The reduced monomer comprises 479 amino acids and has a predicted molecular mass of 53.5 kDa. As a result

of glycosylation, the apparent molecular mass of rhesus DKK1/mFc monomer is approximately 60-70 kDa in SDS-PAGE under reducing conditions.

### Formulation

Lyophilized from sterile PBS, pH 7.4

1. 5 % trehalose and mannitol are added as protectants before lyophilization.
2. Please contact us for any concerns or special requirements.

## Usage Guide

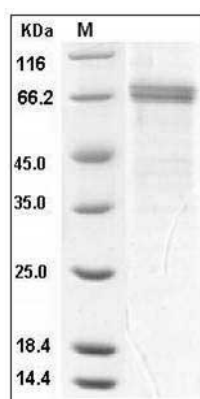
### Storage

Store it under sterile conditions at  $-20^{\circ}\text{C}$  to  $-80^{\circ}\text{C}$ . It is recommended that the protein be aliquoted for optimal storage. Avoid repeated freeze-thaw cycles.

### Reconstitution

Adding sterile water, prepare a stock solution of 0.25 mg/ml. Concentration is measured by UV-Vis.

### SDS-PAGE



Rhesus DKK-1 / Dkk1 Protein (256 Asn/Gln, Fc Tag) SDS-PAGE