

Rhesus DKK-1 (256 Asn/Gln, His Tag) recombinant protein



Catalog Number: 504547

General Information

Protein Construction

A DNA sequence encoding the rhesus DKK1 (XP_001098844.1) precursor (Met 1-His 266) (256 Asn / Gln) was expressed, fused with a C-terminal polyhistidine tag.

Organism

Rhesus

Expression Host

Human Cells

QC Testing

Activity

Measured by its ability to inhibit Wnt3a induced alkaline phosphatase production by C3H10T1/2 2A6 mouse embryonal fibroblast cells. The ED₅₀ for this effect is typically 0.5-3 µg/ml in the presence of 10 ng/mL of Wnt3a.

Purity

> 97 % as determined by SDS-PAGE

Endotoxin

< 1.0 EU per µg of the protein as determined by the LAL method

Stability

Samples are stable for up to twelve months from date of receipt at -70°C

Predicted N terminal

Thr 32

Molecular Mass

The recombinant rhesus DKK1 comprises 246 amino acids with a predicted molecular mass of 27.2 kDa. As a result of glycosylation, the apparent molecular mass of rhesus DKK1 is approximately 38-43 kDa in SDS-PAGE under reducing conditions.

Formulation

Lyophilized from sterile PBS, pH 7.4

1. 5 % trehalose and mannitol are added as protectants before lyophilization.

2. Please contact us for any concerns or special requirements.

Usage Guide

Storage

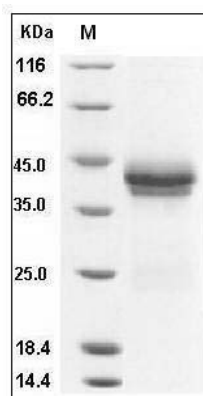
Store it under sterile conditions at -20°C to -80°C.

It is recommended that the protein be aliquoted for optimal storage. Avoid repeated freeze-thaw cycles.

Reconstitution

Adding sterile water, prepare a stock solution of 0.25 mg/ml. Concentration is measured by UV-Vis.

SDS-PAGE



Rhesus DKK-1 / Dkk1 Protein (256 Asn/Gln, His Tag) SDS-PAGE