

Human EpCAM/TROP-1/TACSTD1 (Fc Tag) recombinant protein



Catalog Number: 504528

General Information

Protein Construction

A DNA sequence encoding the extracellular domain (Met 1-Lys265) of human EpCAM (NP_002345.1) was expressed with the fused Fc region of human IgG1 at the C-terminus.

Organism

Human

Expression Host

Human Cells

QC Testing

Purity

> 95 % as determined by SDS-PAGE

Endotoxin

< 1.0 EU per μg of the protein as determined by the LAL method

Stability

Samples are stable for up to twelve months from date of receipt at -70°C

Predicted N terminal

Gln 24

Molecular Mass

The recombinant human EpCAM/Fc chimera is a disulfide-linked homodimeric protein after removal of the signal peptide. The monomer consists of 480 amino acids and has a calculated

molecular mass of 54 kDa. In SDS-PAGE under reducing conditions, the apparent molecular mass of rh EpCAM/Fc is approximately 65-70 kDa due to glycosylation.

Formulation

Lyophilized from sterile PBS, pH 7.4

1. 5 % trehalose and mannitol are added as protectants before lyophilization.
2. Please contact us for any concerns or special requirements.

Usage Guide

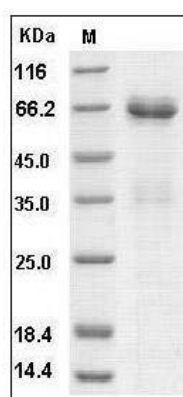
Storage

Store it under sterile conditions at -20°C to -80°C . It is recommended that the protein be aliquoted for optimal storage. Avoid repeated freeze-thaw cycles.

Reconstitution

Adding sterile water, prepare a stock solution of 0.25 mg/ml. Concentration is measured by UV-Vis.

SDS-PAGE



Human EpCAM / TROP-1 / TACSTD1 Protein (Fc Tag) SDS-PAGE