

Cynomolgus M-CSF/CSF-1 (His Tag) recombinant protein



Catalog Number: 504424

General Information

Protein Construction

A DNA sequence encoding the cynomolgus CSF1 (XP_005542489.1) (Met1-Asn190) was expressed with a polyhistidine tag at the C-terminus. Cynomolgus and Rhesus CSF1 sequences are identical.

Organism

Cynomolgus

Expression Host

Human Cells

QC Testing

Purity

> 95 % as determined by SDS-PAGE.

Endotoxin

<1.0 EU per μg protein as determined by the LAL method.

Stability

Samples are stable for up to twelve months from date of receipt at -70°C

Predicted N terminal

Glu 33

Molecular Mass

The recombinant cynomolgus CSF1 consists of

169 amino acids and predicts a molecular mass of 19.8 kDa.

Formulation

Lyophilized from sterile PBS, pH 7.4.

1. 5 % trehalose and mannitol are added as protectants before lyophilization.

2. Please contact us for any concerns or special requirements.

Usage Guide

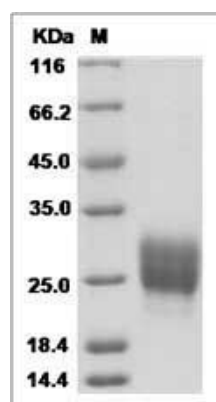
Storage

Store it under sterile conditions at -20°C to -80°C . It is recommended that the protein be aliquoted for optimal storage. Avoid repeated freeze-thaw cycles.

Reconstitution

Adding sterile water, prepare a stock solution of 0.25 mg/ml. Concentration is measured by UV-Vis.

SDS-PAGE



Cynomolgus / Rhesus M-CSF / CSF-1 Protein (His Tag)