

# Canine PD1/PDCD1/CD279 (Fc Tag) recombinant protein



Catalog Number: 504405

## General Information

### Protein Construction

A DNA sequence encoding the canine PDCD1 (XP\_543338.3) (Met1-Leu169) was expressed with the Fc region of human IgG1 at the C-terminus.

### Organism

Canine

### Expression Host

Human Cells

## QC Testing

### Activity

Measured by its binding ability in a functional ELISA.

Immobilized canine PDCD1-Fc at 10 µg/ml (100 µl/well) can bind biotinylated canine PD-L1 (Cat#504410), The EC<sub>50</sub> of biotinylated canine PD-L1 (Cat#504410) is 0.16-0.4 µg/ml.

### Purity

> (20.2+76.0) % as determined by SDS-PAGE.

### Endotoxin

<1.0 EU per µg protein as determined by the LAL method.

### Stability

Samples are stable for up to twelve months from date of receipt at -70°C

### Predicted N terminal

Leu 25

## Molecular Mass

The recombinant canine PDCD1 consists 383 amino acids and predicts a molecular mass of 43 kDa.

## Formulation

Lyophilized from sterile PBS, pH 7.4.

1. 5 % trehalose and mannitol are added as protectants before lyophilization.

2. Please contact us for any concerns or special requirements.

## Usage Guide

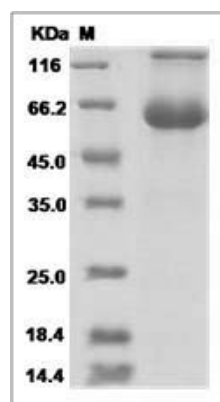
### Storage

Store it under sterile conditions at -20°C to -80°C. It is recommended that the protein be aliquoted for optimal storage. Avoid repeated freeze-thaw cycles.

### Reconstitution

Adding sterile water, prepare a stock solution of 0.25 mg/ml. Concentration is measured by UV-Vis.

## SDS-PAGE



Canine PD1 / PDCD1 / CD279 Protein (Fc Tag)  
SDS-PAGE