

General Information

Protein Construction

A DNA sequence encoding the rat Ccl4 (NP_446310.1) (Ala24-Asn92) was expressed with a polyhistidine tag at the C-terminus.

Organism

Rat

Expression Host

Yeast

QC Testing

Purity

> 90 % as determined by SDS-PAGE.

Endotoxin

Please contact us for more information.

Stability

Samples are stable for up to twelve months from date of receipt at -70°C

Predicted N terminal

Ala 24

Molecular Mass

The recombinant rat Ccl4 consists of 79 amino

acids and predicts a molecular mass of 9.2 kDa.

Formulation

Lyophilized from sterile 30 % CAN, 0.1 % TFA.

1. 5 % trehalose and mannitol are added as protectants before lyophilization.

2. Please contact us for any concerns or special requirements.

Usage Guide

Storage

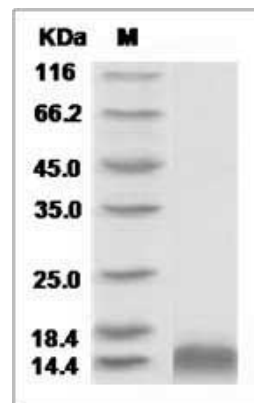
Store it under sterile conditions at -20°C to -80°C.

It is recommended that the protein be aliquoted for optimal storage. Avoid repeated freeze-thaw cycles.

Reconstitution

Adding sterile water, prepare a stock solution of 0.25 mg/ml. Concentration is measured by UV-Vis.

SDS-PAGE



Rat CCL4 / MIP1B Protein(His Tag)