

Human TROP-2/TACSTD2 (His & Fc Tag) recombinant protein



Catalog Number: 504302

General Information

Gene Name Synonym

Cell surface glycoprotein Trop-2; Membrane component chromosome 1 surface marker 1; Pancreatic carcinoma marker protein GA733-1

Protein Construction

A DNA sequence encoding the extracellular domain (Met 1-Thr 274) of human TROP2 (NP_002344.2) was fused with the C-terminal polyhistidine-tagged Fc region of human IgG1 at the C-terminus.

Organism

Human

Expression Host

Human Cells

QC Testing

Activity

Measured by the ability of the immobilized protein to support the adhesion of U937 human histiocytic lymphoma cells. When cells are added to TROP2 coated plates (10 µg/ml, 100 µl/well), approximately 90%-100% will adhere specifically.

Purity

> 98 % as determined by SDS-PAGE

Endotoxin

< 1.0 EU per µg of the protein as determined by the LAL method

Stability

Samples are stable for up to twelve months from date of receipt at -70°C

Predicted N terminal

His 27

Molecular Mass

The recombinant human TROP2/Fc is a disulfide-linked homodimer. The reduced monomer consists of 495 amino acids and has a predicted molecular mass of 55.7 kDa. In SDS-PAGE under reducing conditions, the apparent molecular mass of rhTROP2/Fc monomer is approximately 65-75 kDa due to glycosylation.

Formulation

Lyophilized from sterile PBS, pH 7.4

1. 5 % trehalose and mannitol are added as protectants before lyophilization.
2. Please contact us for any concerns or special requirements.

Usage Guide

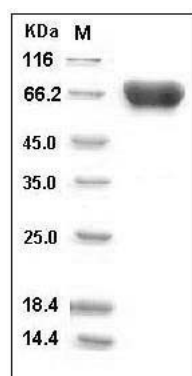
Storage

Store it under sterile conditions at -20°C to -80°C. It is recommended that the protein be aliquoted for optimal storage. Avoid repeated freeze-thaw cycles.

Reconstitution

Adding sterile water, prepare a stock solution of 0.25 mg/ml. Concentration is measured by UV-Vis.

SDS-PAGE



Human TROP2 / TACSTD2 Protein (His & Fc Tag)

Human TROP-2/TACSTD2 (His & Fc Tag) recombinant protein



Catalog Number: 504302

SDS-PAGE