

General Information

Gene Name Synonym

Protein ST2

Protein Construction

A DNA sequence encoding the human IL1RL1 isoform 2 (NP_003847.2) (Met 1-Phe 328) was expressed, fused with a polyhistidine tag at the C-terminus.

Organism

Human

Expression Host

Human Cells

QC Testing

Activity

1. Measured by its binding ability in a functional ELISA.
2. Immobilized recombinant human IL33 (Cat: 501288) at 10 µg/mL (100 µl/well) can bind biotinylated human IL1RL1 (Cat: 504252) with a linear range of 0.16-8 µg/ml.

Purity

> 95 % as determined by SDS-PAGE

Endotoxin

< 1.0 EU per µg of the protein as determined by the LAL method

Stability

Samples are stable for up to twelve months from date of receipt at -70°C

Predicted N terminal

Lys 19

Molecular Mass

The recombinant human IL1RL1 consists of 321 amino acids and has a calculated molecular mass of 36.5 kDa. As a result of glycosylation, the apparent molecular mass of rhIL1RL1 is approximately 55-60 kDa in SDS-PAGE under reducing conditions.

Formulation

Lyophilized from sterile PBS, pH 7.4

1. 5 % trehalose and mannitol are added as protectants before lyophilization.
2. Please contact us for any concerns or special requirements.

Usage Guide

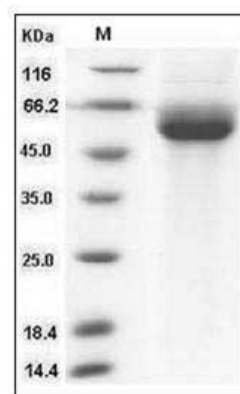
Storage

Store it under sterile conditions at -20°C to -80°C. It is recommended that the protein be aliquoted for optimal storage. Avoid repeated freeze-thaw cycles.

Reconstitution

Adding sterile water, prepare a stock solution of 0.25 mg/ml. Concentration is measured by UV-Vis.

SDS-PAGE



Human IL1RL1 / ST2 Protein (His Tag) SDS-PAGE