

Human S100A2 (Fc Tag) recombinant protein



Catalog Number: 504251

General Information

Gene Name Synonym

CAN19; Protein S-100L; S100 calcium-binding protein A2

Protein Construction

A DNA sequence encoding the human S100A2 (NP_005969.1) (Met 2-Pro98) was expressed with the fused Fc region of human IgG1 at the N-terminus.

Organism

Human

Expression Host

Human Cells

QC Testing

Purity

> 95 % as determined by SDS-PAGE

Endotoxin

< 1.0 EU per μg of the protein as determined by the LAL method

Stability

Samples are stable for up to twelve months from date of receipt at -70°C

Predicted N terminal

Glu 20

Molecular Mass

The recombinant human Fc/S100A2 is a disulfide-

linked homodimer. The reduced monomer consists of 334 amino acids and has a predicted molecular mass of 37.6 kDa. As a result of glycosylation, the apparent molecular mass of rh Fc/S100A2 monomer is approximately 40 kDa in SDS-PAGE under reducing conditions.

Formulation

Lyophilized from sterile 100mM Glycine, 10mM NaCl, 50mM Tris, pH 7.5

1. 5 % trehalose and mannitol are added as protectants before lyophilization.

2. Please contact us for any concerns or special requirements.

Usage Guide

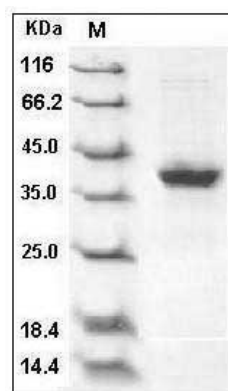
Storage

Store it under sterile conditions at -20°C to -80°C . It is recommended that the protein be aliquoted for optimal storage. Avoid repeated freeze-thaw cycles.

Reconstitution

Adding sterile water, prepare a stock solution of 0.25 mg/ml. Concentration is measured by UV-Vis.

SDS-PAGE



Human S100A2 Protein (Fc Tag) SDS-PAGE