

## General Information

### Gene Name Synonym

FIL1 delta; IL-1-related protein 3; Interleukin-1 HY1; Interleukin-1 delta; Interleukin-1 family member 5; Interleukin-1 receptor antagonist homolog 1; Interleukin-1-like protein 1

### Protein Construction

A DNA sequence encoding the mature form of human CXCL10 (Q9UBH0) (Val22-Pro98) was expressed, with a N-terminal Met.

### Organism

Human

### Expression Host

E. coli

## QC Testing

### Purity

> 90 % as determined by SDS-PAGE

### Endotoxin

Please contact us for more information.

### Stability

Samples are stable for up to twelve months from date of receipt at -70°C

### Predicted N terminal

Met

### Molecular Mass

The recombinant human CXCL10 consists of 78 amino acids and predicts a molecular mass of 8.8 KDa. It migrates as an approximately 9 KDa band in SDS-PAGE under reducing conditions.

### Formulation

Lyophilized from sterile PBS

1. 5 % trehalose and mannitol are added as protectants before lyophilization.

2. Please contact us for any concerns or special requirements.

## Usage Guide

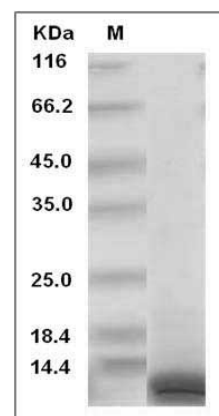
### Storage

Store it under sterile conditions at -20°C to -80°C. It is recommended that the protein be aliquoted for optimal storage. Avoid repeated freeze-thaw cycles.

### Reconstitution

Adding sterile water, prepare a stock solution of 0.25 mg/ml. Concentration is measured by UV-Vis.

### SDS-PAGE



Human CXCL10 / Crg-2 Protein SDS-PAGE