

# Human SMPD1 (His Tag) recombinant protein



Catalog Number: 504178

## General Information

### Gene Name Synonym

Acid sphingomyelinase

### Protein Construction

A DNA sequence encoding the full length of human SMPD1 isoform 1 (NP\_000534.3) (Met 1-Cys 631) was expressed, fused with a polyhistidine tag at the C-terminus.

### Organism

Human

### Expression Host

Baculovirus-Insect Cells

## QC Testing

### Activity

Measured by its ability to cleave. 2-N-Hexadecanoylamino-4-nitrophenylphosphorylcholine (HNPPC). The specific activity is >1,000 pmol/min/ $\mu$ g.

### Purity

> 94 % as determined by SDS-PAGE

### Endotoxin

< 1.0 EU per  $\mu$ g of the protein as determined by the LAL method

### Stability

Samples are stable for up to twelve months from date of receipt at -70°C

### Predicted N terminal

His 62

## Molecular Mass

The secreted recombinant human SMPD1 consists of 518 amino acids and predicts a molecular mass of 65 kDa as estimated by SDS-PAGE under reducing conditions.

## Formulation

Supplied as sterile 50mM Tris, 100mM NaCl, pH 8.0, 0.1% OGP, 10% glycerol

1. 5 % trehalose and mannitol are added as protectants before lyophilization.

2. Please contact us for any concerns or special requirements.

## Usage Guide

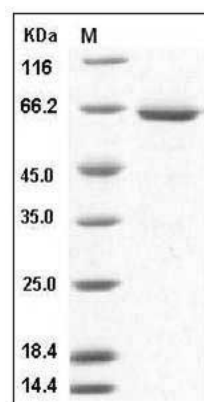
### Storage

Store it under sterile conditions at -20°C to -80°C. It is recommended that the protein be aliquoted for optimal storage. Avoid repeated freeze-thaw cycles.

### Reconstitution

Adding sterile water, prepare a stock solution of 0.25 mg/ml. Concentration is measured by UV-Vis.

### SDS-PAGE



Human SMPD1 / ASM Protein (His Tag) SDS-PAGE