

# Human GPHA2 / glycoprotein hormone alpha 2 (His Tag)



Catalog Number: 504159

## General Information

### Gene Name Synonym

Putative secreted protein Zsig51; Thyrostimulin subunit alpha

### Protein Construction

A DNA sequence encoding the human GPHA2 (Q96T91) (Met1-Tyr129) was expressed with a polyhistidine tag at the C-terminus.

### Organism

Human

### Expression Host

Human Cells

## QC Testing

### Purity

> 90 % as determined by SDS-PAGE

### Endotoxin

< 1.0 EU per  $\mu\text{g}$  of the protein as determined by the LAL method

### Stability

Samples are stable for up to twelve months from date of receipt at  $-70^{\circ}\text{C}$

### Predicted N terminal

Gln 24

### Molecular Mass

The recombinant human GPHA2 consists of 117 amino acids and predicts a molecular mass of 13.1 KDa. It migrates as an approximately 23 KDa band in SDS-PAGE under reducing conditions.

### Formulation

Lyophilized from sterile PBS, pH 7.4.

1. 5 % trehalose and mannitol are added as protectants before lyophilization.

2. Please contact us for any concerns or special requirements.

## Usage Guide

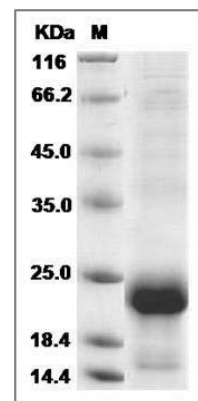
### Storage

Store it under sterile conditions at  $-20^{\circ}\text{C}$  to  $-80^{\circ}\text{C}$ . It is recommended that the protein be aliquoted for optimal storage. Avoid repeated freeze-thaw cycles.

### Reconstitution

Adding sterile water, prepare a stock solution of 0.25 mg/ml. Concentration is measured by UV-Vis.

### SDS-PAGE



Human GPHA2 / Glycoprotein hormone alpha 2 Protein (His Tag) SDS-PAGE