

Human PRDM2/RIZ1 (GST Tag) recombinant protein



Catalog Number: 504107

General Information

Gene Name Synonym

GATA-3-binding protein G3B; Lysine N-methyltransferase 8; MTB-ZF; MTE-binding protein; PR domain-containing protein 2; Retinoblastoma protein-interacting zinc finger protein; Zinc finger protein RIZ

Protein Construction

A DNA sequence encoding the N-terminal segment of human PRDM2 (NP_036363.2) (Met 1-Ala 200), containing the SET domain, was fused with the GST tag at the N-terminus.

Organism

Human

Expression Host

E. coli

QC Testing

Purity

> 86 % as determined by SDS-PAGE

Endotoxin

Please contact us for more information.

Stability

Samples are stable for up to twelve months from date of receipt at -70°C

Predicted N terminal

Met

Molecular Mass

The recombinant human PRDM2/GST chimera consists of 432 amino acids and predicts a molecular mass of 49.6 kDa as estimated in SDS-PAGE under reducing conditions.

Formulation

Lyophilized from sterile 20mM Tris, 150mM NaCl, 0.5mM DTT, 0.5mM GSH, pH 8.0

1. 5 % trehalose and mannitol are added as protectants before lyophilization.
2. Please contact us for any concerns or special requirements.

Usage Guide

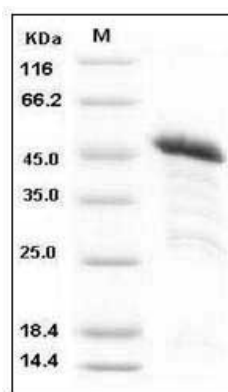
Storage

Store it under sterile conditions at -20°C to -80°C. It is recommended that the protein be aliquoted for optimal storage. Avoid repeated freeze-thaw cycles.

Reconstitution

Adding sterile water, prepare a stock solution of 0.25 mg/ml. Concentration is measured by UV-Vis.

SDS-PAGE



Human PRDM2 / RIZ1 Protein (GST Tag) SDS-PAGE