

# Cynomolgus Fractalkine/CX3CL1 (Fc Tag) recombinant protein



Catalog Number: 504090

## General Information

### Protein Construction

A DNA sequence encoding the cynomolgus CX3CL1 (EHH60415.1) (Met1-Gly100) was expressed with the Fc region of human IgG1 at the C-terminus. Cynomolgus and Rhesus CX3CL1 sequences are identical.

### Organism

Cynomolgus

### Expression Host

Human Cells

## QC Testing

### Purity

(90.9+6.8) % as determined by SDS-PAGE

### Endotoxin

< 1.0 EU per  $\mu\text{g}$  of the protein as determined by the LAL method

### Stability

Samples are stable for up to twelve months from date of receipt at  $-70^{\circ}\text{C}$

### Predicted N terminal

Gln 25

### Molecular Mass

The recombinant cynomolgus CX3CL1 comprises 317 amino acids and has a calculated molecular

mass of 35.7 KDa. The apparent molecular mass of it is approximately 40.8 and 35.2 KDa respectively in SDS-PAGE under reducing conditions.

### Formulation

Lyophilized from sterile PBS, pH 7.4.

1. 5 % trehalose and mannitol are added as protectants before lyophilization.

2. Please contact us for any concerns or special requirements.

## Usage Guide

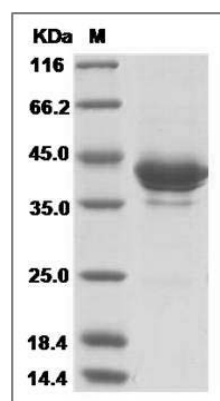
### Storage

Store it under sterile conditions at  $-20^{\circ}\text{C}$  to  $-80^{\circ}\text{C}$ . It is recommended that the protein be aliquoted for optimal storage. Avoid repeated freeze-thaw cycles.

### Reconstitution

Adding sterile water, prepare a stock solution of 0.25 mg/ml. Concentration is measured by UV-Vis.

### SDS-PAGE



Cynomolgus / Rhesus Fractalkine / CX3CL1 Protein (Fc Tag) SDS-PAGE