

# Human GOLM1/GP73 (His Tag) recombinant protein



Catalog Number: 504067

## General Information

### Gene Name Synonym

Golgi membrane protein GP73; Golgi phosphoprotein 2

### Protein Construction

A DNA sequence encoding the human GOLM1 isoform 1 (Q8NBJ4-1) (Val 40-Leu 401) was fused with a polyhistidine tag at the C-terminus and a Met at the N-terminus.

### Organism

Human

### Expression Host

Human Cells

## QC Testing

### Purity

> 90 % as determined by SDS-PAGE

### Endotoxin

< 1.0 EU per  $\mu\text{g}$  of the protein as determined by the LAL method

### Stability

Samples are stable for up to twelve months from date of receipt at  $-70^{\circ}\text{C}$

### Predicted N terminal

Met

### Molecular Mass

The recombinant human GOLM1 consists of 374 amino acids and has a predicted molecular mass of 42.7 kDa. In SDS-PAGE under reducing conditions, the apparent molecular mass of rh GOLM1 is approximately 60 kDa.

### Formulation

Lyophilized from sterile PBS, pH 7.4

- 5 % trehalose and mannitol are added as protectants before lyophilization.
- Please contact us for any concerns or special requirements.

## Usage Guide

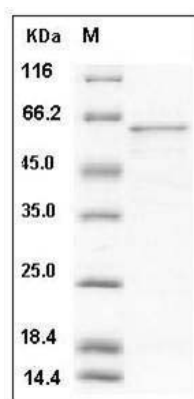
### Storage

Store it under sterile conditions at  $-20^{\circ}\text{C}$  to  $-80^{\circ}\text{C}$ . It is recommended that the protein be aliquoted for optimal storage. Avoid repeated freeze-thaw cycles.

### Reconstitution

Adding sterile water, prepare a stock solution of 0.25 mg/ml. Concentration is measured by UV-Vis.

### SDS-PAGE



Human GOLM1 / GP73 Protein (His Tag) SDS-PAGE