

# Human GM-CSF / CSF2 (Fc Tag) recombinant protein



Catalog Number: 504038

## General Information

### Gene Name Synonym

Colony-stimulating factor; Molgramostin; Sargramostim

### Protein Construction

A DNA sequence encoding the mature form of human GM-CSF (NP\_000749.2) (Ala 18-Glu 144) was fused with the Fc region of human IgG1 at the N-terminus.

### Organism

Human

### Expression Host

Human Cells

## QC Testing

### Activity

1. Measured by its binding ability in a functional ELISA. Immobilized CD131 at 10 µg/ml (100 µl/well) can bind recombinant human GM-CSF / Fc with a linear range of 0.032-4 µg/ml.
2. Measured in a cell proliferation assay using TF-1 human erythroleukemic cells. The ED<sub>50</sub> for this effect is typically 1-5 ng/mL.

### Purity

> 97 % as determined by SDS-PAGE

### Endotoxin

< 1.0 EU per µg of the protein as determined by the LAL method

### Stability

Samples are stable for up to twelve months from date of receipt at -70°C

## Predicted N terminal

Glu 20

## Molecular Mass

The recombinant human GM-CSF/Fc is a disulfide-linked homodimeric protein. The reduced monomer consists of 364 amino acids and has a predicted molecular mass of 41 kDa. In SDS-PAGE under reducing conditions, the apparent molecular mass of rh GM-CSF/Fc monomer is approximately 48-55 kDa due to glycosylation.

## Formulation

Lyophilized from sterile 100mM Glycine, 10mM NaCl, 50mM Tris, pH 7.5

1. 5 % trehalose and mannitol are added as protectants before lyophilization.
2. Please contact us for any concerns or special requirements.

## Usage Guide

### Storage

Store it under sterile conditions at -20°C to -80°C. It is recommended that the protein be aliquoted for optimal storage. Avoid repeated freeze-thaw cycles.

### Reconstitution

Adding sterile water, prepare a stock solution of 0.25 mg/ml. Concentration is measured by UV-Vis.

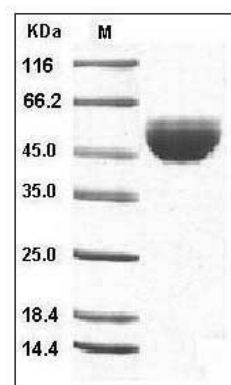
## SDS-PAGE

# Human GM-CSF / CSF2 (Fc Tag) recombinant protein



Catalog Number: 504038

---



Human GM-CSF / CSF2 Protein (Fc Tag) SDS-PAGE