

General Information

Gene Name Synonym

GP1,2; GP1; GP2; GP2-delta

Protein Construction

A DNA sequence encoding the Sudan ebolavirus(strain Gulu) GP (YP_138523.1) (Met1-Arg501) was expressed with a polyhistidine tag at the C-terminus.

Organism

EBOV

Expression Host

Baculovirus-Insect Cells

QC Testing

Purity

> 90 % as determined by SDS-PAGE.

Endotoxin

<1.0 EU per µg protein as determined by the LAL method.

Stability

Samples are stable for up to twelve months from date of receipt at -70°C

Predicted N terminal

Met 33

Molecular Mass

The recombinant Sudan ebolavirus(strain Gulu) GP consists 480 amino acids and predicts a molecular mass of 52.5 kDa.

Formulation

Lyophilized from sterile 20 mM Tris, 500 mM NaCl, 10 % glycerol, pH 7.4.

1. 5 % trehalose and mannitol are added as protectants before lyophilization.

2. Please contact us for any concerns or special requirements.

Usage Guide

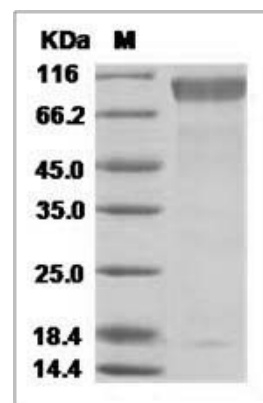
Storage

Store it under sterile conditions at -20°C to -80°C. It is recommended that the protein be aliquoted for optimal storage. Avoid repeated freeze-thaw cycles.

Reconstitution

Adding sterile water, prepare a stock solution of 0.25 mg/ml. Concentration is measured by UV-Vis.

SDS-PAGE



Ebola virus EBOV (subtype Sudan, strain Gulu) GP1 / Glycoprotein Protein (His Tag)