

## General Information

### Gene Name Synonym

EFL-2; EHK1 ligand; EPH-related receptor tyrosine kinase ligand 3

### Protein Construction

A DNA sequence encoding the human EphrinA3 (NP\_004943.1) (Met 1-Ser 213) with quinary-aa peptide (DDDDK) at the C-terminus was expressed and purified.

### Organism

Human

### Expression Host

Human Cells

## QC Testing

### Activity

Measured by its ability to bind biotinylated mouse EPHA6-Fc (Cat:501356) in a functional ELISA.

### Purity

> 70 % as determined by SDS-PAGE

### Endotoxin

< 1.0 EU per  $\mu\text{g}$  of the protein as determined by the LAL method

### Stability

Samples are stable for up to twelve months from date of receipt at  $-70^{\circ}\text{C}$

### Predicted N terminal

Gln 23

## Molecular Mass

The recombinant human EphrinA3 consists of 197 amino acids and has a predicted molecular mass of 22 kDa. In SDS-PAGE under reducing conditions, the apparent molecular mass of rhEphrinA3 is approximately 35-40 kDa due to glycosylation.

## Formulation

Lyophilized from sterile 50mM Tris, 100mM NaCl, pH 8.0

1. 5 % trehalose and mannitol are added as protectants before lyophilization.

2. Please contact us for any concerns or special requirements.

## Usage Guide

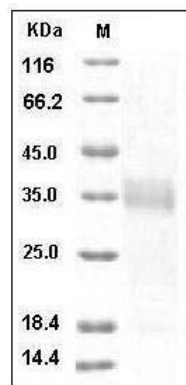
### Storage

Store it under sterile conditions at  $-20^{\circ}\text{C}$  to  $-80^{\circ}\text{C}$ . It is recommended that the protein be aliquoted for optimal storage. Avoid repeated freeze-thaw cycles.

### Reconstitution

Adding sterile water, prepare a stock solution of 0.25 mg/ml. Concentration is measured by UV-Vis.

## SDS-PAGE



Human Ephrin-A3 / EFNA3 Protein SDS-PAGE