

Rhesus ACE2 / Angiotensin-Converting Enzyme 2 (His Tag) recombinant protein



Catalog Number: 503941

General Information

Protein Construction

A DNA sequence encoding the rhesus ACE2 (ACI04564.1) (Met1-Val739) was expressed with a polyhistidine tag at the C-terminus.

Organism

Rhesus

Expression Host

Human Cells

QC Testing

Activity

Measured by its ability to cleave a fluorogenic peptide substrate, Mca-YVADAPK (Dnp)-OH (Catalog # ES007).

The specific activity is >800 pmol/min/ μ g.

Purity

(80.8+16.6) % as determined by SDS-PAGE

Endotoxin

< 1.0 EU per μ g of the protein as determined by the LAL method

Stability

Samples are stable for up to twelve months from date of receipt at -70°C

Predicted N terminal

Gln 18

Molecular Mass

The recombinant rhesus ACE2 comprises 733 amino acids and has a calculated molecular mass of 85.1 KDa.

Formulation

Lyophilized from sterile 25mM Tris, 150mM NaCl, 1mM ZnCl₂, pH 7.5.

1. 5 % trehalose and mannitol are added as protectants before lyophilization.

2. Please contact us for any concerns or special requirements.

Usage Guide

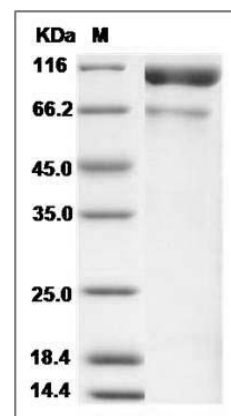
Storage

Store it under sterile conditions at -20°C to -80°C . It is recommended that the protein be aliquoted for optimal storage. Avoid repeated freeze-thaw cycles.

Reconstitution

Adding sterile water, prepare a stock solution of 0.25 mg/ml. Concentration is measured by UV-Vis.

SDS-PAGE



Cynomolgus ACE2 / Angiotensin-Converting Enzyme 2 Protein (His Tag) SDS-PAGE