

Human IgG1 Fc (103 Cys/Ser) recombinant protein



Catalog Number: 503915

General Information

Protein Construction

A DNA sequence encoding the human IgG1 Fc region (AAC82527.1) (Glu 99-Lys 330) (one aa mutation, 103 Cys/Ser) was expressed.

Organism

Human

Expression Host

Human Cells

QC Testing

Activity

1. Measured by its ability to bind human CD16a-His (Cat:503246) in a functional ELISA.
2. Measured by its ability to bind human CD16a-AVI-His (Cat:503735) in a functional ELISA.
3. Measured by its ability to bind human CD16a-His (Cat:503372) in a functional ELISA.

Purity

> 95 % as determined by SDS-PAGE

Endotoxin

< 1.0 EU per μg of the protein as determined by the LAL method

Stability

Samples are stable for up to twelve months from date of receipt at -70°C

Predicted N terminal

Glu 99

Molecular Mass

The recombinant human IgG1 Fc consists of 232 amino acids and has a predicted molecular mass of 26 kDa. As a result of glycosylation, the apparent molecular mass of rhFc is approximately 32 kDa in SDS-PAGE under reducing conditions.

Formulation

- Lyophilized from sterile PBS, pH 7.4
1. 5 % trehalose and mannitol are added as protectants before lyophilization.
 2. Please contact us for any concerns or special requirements.

Usage Guide

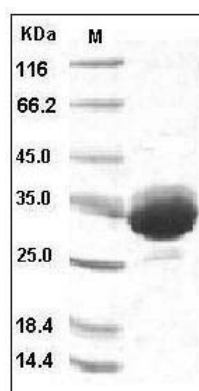
Storage

Store it under sterile conditions at -20°C to -80°C . It is recommended that the protein be aliquoted for optimal storage. Avoid repeated freeze-thaw cycles.

Reconstitution

Adding sterile water, prepare a stock solution of 0.25 mg/ml. Concentration is measured by UV-Vis.

SDS-PAGE



Human IgG1-Fc Protein (103 Cys/Ser) SDS-PAGE