

## General Information

### Gene Name Synonym

MAP kinase 12; MAPK 12; EC 2.7.11.24;  
Extracellular signal-regulated kinase 6; ERK-6;  
Mitogen-activated protein kinase p38 gamma;  
MAP kinase p38 gamma; Stress-activated protein  
kinase 3

### Protein Construction

A DNA sequence encoding the human MAPK12 (P53778) (Met1-Leu367) was fused with two additional amino acids (Gly & Pro) at the N-terminus.

### Organism

Human

### Expression Host

Baculovirus-Insect Cells

## QC Testing

### Activity

Kinase activity untested

### Purity

> 95 % as determined by SDS-PAGE

### Endotoxin

< 1.0 EU per  $\mu\text{g}$  of the protein as determined by the LAL method

### Stability

Samples are stable for up to twelve months from date of receipt at  $-70^{\circ}\text{C}$

### Predicted N terminal

Gly

## Molecular Mass

The recombinant human MAPK12 consists of 369 amino acids and has a calculated molecular mass of 42.1 kDa. The recombinant protein migrates as an approximately 43 kDa band in SDS-PAGE under reducing conditions.

## Formulation

Supplied as sterile 20mM Tris, 500mM NaCl, 10% glycerol, pH 8.0.

1. 5 % trehalose and mannitol are added as protectants before lyophilization.

2. Please contact us for any concerns or special requirements.

## Usage Guide

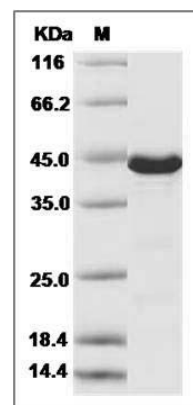
### Storage

Store it under sterile conditions at  $-20^{\circ}\text{C}$  to  $-80^{\circ}\text{C}$ . It is recommended that the protein be aliquoted for optimal storage. Avoid repeated freeze-thaw cycles.

## Reconstitution

Adding sterile water, prepare a stock solution of 0.25 mg/ml. Concentration is measured by UV-Vis.

## SDS-PAGE



Human ERK3 / MAPK12 / P38-gamma Protein  
SDS-PAGE