

Mouse PD1/PDCD1/CD279 (His & Fc Tag) recombinant protein



Catalog Number: 503887

General Information

Gene Name Synonym:

Protein Construction:

A DNA sequence encoding the extracellular domain (Met 1-Gln 167) of mouse PDCD1 (NP_032824.1) was fused with the C-terminal polyhistidine-tagged Fc region of human IgG1 at the C-terminus.

Source: Mouse

Expression Host: Human Cells

QC Testing

Activity:

Measured by its binding ability in a functional ELISA. Immobilized recombinant mouse PD1-L1 at 1 µg/ml (100 µl/well) can bind mouse PD1 with a linear range of 6.25-400 ng/ml.

Purity:

> 90 % as determined by SDS-PAGE, with approximately 10 % free Fc fragment.

Endotoxin:

< 1.0 EU per µg of the protein as determined by the LAL method

Stability:

Samples are stable for up to twelve months from date of receipt at -70°C

Predicted N terminal:

Leu 25

Molecular Mass:

The recombinant mouse PDCD1/Fc chimera is a disulfide-linked homodimeric protein. The reduced monomer consists of 391 amino acids and has a predicted molecular mass of 44.2 kDa. In SDS-PAGE under reducing conditions, the apparent molecular mass of rm PDCD1/Fc monomer is approximately 60-65 kDa due to glycosylation.

Formulation:

Lyophilized from sterile PBS, pH 7.4

1. 5 % trehalose and mannitol are added as protectants before lyophilization.

2. Please contact us for any concerns or special requirements.

Usage Guide

Storage:

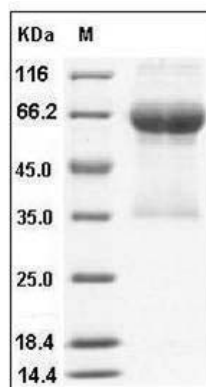
Store it under sterile conditions at -20°C to -80°C.

It is recommended that the protein be aliquoted for optimal storage. Avoid repeated freeze-thaw cycles.

Reconstitution:

Adding sterile water, prepare a stock solution of 0.25 mg/ml. Concentration is measured by UV-Vis.

SDS-PAGE:



Mouse PD1 / PDCD1 Protein (His & Fc Tag) SDS-PAGE