

Human GDF-15 (Mature Form) recombinant protein



Catalog Number: 503876

General Information

Gene Name Synonym

Macrophage inhibitory cytokine 1; NSAID-activated gene 1 protein; NSAID-regulated gene 1 protein; Placental TGF-beta; Placental bone morphogenetic protein; Prostate differentiation factor

Protein Construction

A DNA sequence encoding the mature form of human GDF15 (NP_004855.2) (Ala197-Ile308) was expressed with a polyhistidine tag at the N-terminus.

Organism

Human

Expression Host

Yeast

QC Testing

Purity

> 90 % as determined by SDS-PAGE.

Endotoxin

Please contact us for more information.

Stability

Samples are stable for up to twelve months from date of receipt at -70°C

Predicted N terminal

His

Molecular Mass

The recombinant mature form of human GDF15 consists of 130 amino acids and predicts a molecular mass of 14.2 kDa.

Formulation

Lyophilized from sterile 35 % CAN, 0.1 % TFA.
1. 5 % trehalose and mannitol are added as protectants before lyophilization.
2. Please contact us for any concerns or special requirements.

Usage Guide

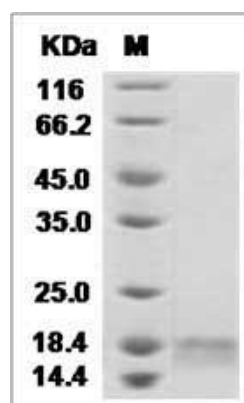
Storage

Store it under sterile conditions at -20°C to -80°C. It is recommended that the protein be aliquoted for optimal storage. Avoid repeated freeze-thaw cycles.

Reconstitution

Adding sterile water, prepare a stock solution of 0.25 mg/ml. Concentration is measured by UV-Vis.

SDS-PAGE



Human GDF-15 / GDF15 Protein (His Tag)
(Mature Form)