

Cynomolgus c-Met/HGFR (His Tag) recombinant protein



Catalog Number: 503834

General Information

Protein Construction

A DNA sequence encoding the cynomolgus/rhesus MET (NP_001162100.1) (Met1-Thr932) was expressed with a polyhistidine tag at the C-terminus. Cynomolgus and Rhesus MET sequences are identical.

Organism

Cynomolgus

Expression Host

Human Cells

QC Testing

Activity

Immobilized Cynomolgus MET-His at 10 µg/ml (100 µl/well) can bind biotinylated Cynomolgus HGF (cat:503008), The EC₅₀ of biotinylated Cynomolgus HGF (cat:503008) is 0.11-0.27 µg/ml.

Purity

(4.6+58.2+34.7) % as determined by SDS-PAGE

Endotoxin

< 1.0 EU per µg of the protein as determined by the LAL method

Stability

Samples are stable for up to twelve months from date of receipt at -70°C

Predicted N terminal

Glu 25

Molecular Mass

The recombinant cynomolgus/rhesus MET comprises 919 amino acids and has a calculated molecular mass of 103.1 KDa. The apparent molecular mass of it is approximately 128.2, 77.6 and 45.7 KDa in SDS-PAGE under reducing conditions.

Formulation

Lyophilized from sterile PBS, pH 7.4.

1. 5 % trehalose and mannitol are added as protectants before lyophilization.

2. Please contact us for any concerns or special requirements.

Usage Guide

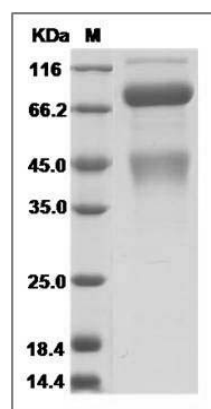
Storage

Store it under sterile conditions at -20°C to -80°C. It is recommended that the protein be aliquoted for optimal storage. Avoid repeated freeze-thaw cycles.

Reconstitution

Adding sterile water, prepare a stock solution of 0.25 mg/ml. Concentration is measured by UV-Vis.

SDS-PAGE



Cynomolgus / Rhesus c-MET / HGFR Protein (His Tag) SDS-PAGE