

Rat CD166/ALCAM (Fc Tag) recombinant protein



Catalog Number: 503801

General Information

Gene Name Synonym

Activated leukocyte cell adhesion molecule; HB2; KG-CAM; Protein MEMD; SB-10 antigen

Protein Construction

A DNA sequence encoding the rat ALCAM (O35112) (Met1-Lys527) was expressed with the Fc region of human IgG1 at the C-terminus.

Organism

Rat

Expression Host

Human Cells

QC Testing

Activity

Immobilized rat CD6-His (Cat:500412) at 10 µg/ml (100 µl/well) can bind rat ALCAM-Fc3, The EC₅₀ of rat ALCAM-Fc3 is 19.5-45.5 ng/ml.

Purity

> 95 % as determined by SDS-PAGE

Endotoxin

< 1.0 EU per µg of the protein as determined by the LAL method

Stability

Samples are stable for up to twelve months from date of receipt at -70°C

Predicted N terminal

Trp 28

Molecular Mass

The recombinant rat ALCAM/Fc is a disulfide-linked homodimer. The reduced monomer comprises 741 amino acids and has a predicted molecular mass of 83.1 kDa. The apparent molecular mass of the protein is approximately 94 kDa in SDS-PAGE under reducing conditions due to glycosylation.

Formulation

Lyophilized from sterile PBS, pH 7.4.

1. 5 % trehalose and mannitol are added as protectants before lyophilization.

2. Please contact us for any concerns or special requirements.

Usage Guide

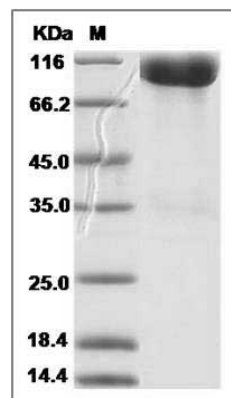
Storage

Store it under sterile conditions at -20°C to -80°C. It is recommended that the protein be aliquoted for optimal storage. Avoid repeated freeze-thaw cycles.

Reconstitution

Adding sterile water, prepare a stock solution of 0.25 mg/ml. Concentration is measured by UV-Vis.

SDS-PAGE



Rat ALCAM / CD166 Protein (Fc Tag) SDS-PAGE