

General Information

Gene Name Synonym

Colony-stimulating factor

Protein Construction

A DNA sequence encoding the rat CSF2 (P48750) (Ala18-Lys144) was expressed with Fc region of human IgG1 at the N-terminus.

Organism

Rat

Expression Host

Human Cells

QC Testing

Activity

Measured in a cell proliferation assay using FDC-P1 cells.

The ED₅₀ for this effect is typically 0.2-1 ng/mL.

Purity

(88.2±10.0) % as determined by SDS-PAGE

Endotoxin

< 1.0 EU per µg of the protein as determined by the LAL method

Stability

Samples are stable for up to twelve months from date of receipt at -70°C

Predicted N terminal

Glu

Molecular Mass

The recombinant rat CSF2 comprises 387 amino acids and predicts a molecular mass of 43 kDa. The apparent molecular mass of the recombinant protein is approximately 43-47 and 36 kDa in SDS-PAGE under reducing conditions due to glycosylation.

Formulation

Lyophilized from sterile PBS, pH 7.4.

1. 5 % trehalose and mannitol are added as protectants before lyophilization.

2. Please contact us for any concerns or special requirements.

Usage Guide

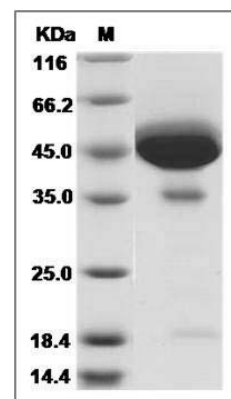
Storage

Store it under sterile conditions at -20°C to -80°C. It is recommended that the protein be aliquoted for optimal storage. Avoid repeated freeze-thaw cycles.

Reconstitution

Adding sterile water, prepare a stock solution of 0.25 mg/ml. Concentration is measured by UV-Vis.

SDS-PAGE



Rat GM-CSF / CSF2 Protein (Fc Tag) SDS-PAGE