

Human Dectin-1/CLEC7A (Fc Tag) recombinant protein



Catalog Number: 503721

General Information

Gene Name Synonym

Putative uncharacterized protein
DKFZp686L24211; cDNA FLJ59887, moderately similar to Homo sapiens C-type lectin domain family 7, member A (CLEC7A), transcript variant 4

Protein Construction

A DNA sequence encoding the human CLEC7A (NP_072092.2) (Thr66-Met201) was expressed with the Fc region of mouse IgG1 at the N-terminus.

Organism

Human

Expression Host

Human Cells

QC Testing

Purity

> (67.4+23.6) % as determined by SDS-PAGE.

Endotoxin

< 1.0 EU per µg protein as determined by the LAL method.

Stability

Samples are stable for up to twelve months from date of receipt at -70°C

Predicted N terminal

Asp

Molecular Mass

The recombinant human CLEC7A consists 372 amino acids and predicts a molecular mass of 42.1 kDa.

Formulation

Lyophilized from sterile PBS, pH 7.4.

1. 5 % trehalose and mannitol are added as protectants before lyophilization.
2. Please contact us for any concerns or special requirements.

Usage Guide

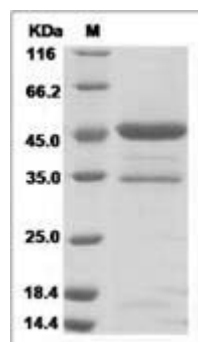
Storage

Store it under sterile conditions at -20°C to -80°C. It is recommended that the protein be aliquoted for optimal storage. Avoid repeated freeze-thaw cycles.

Reconstitution

Adding sterile water, prepare a stock solution of 0.25 mg/ml. Concentration is measured by UV-Vis.

SDS-PAGE



Human Dectin-1 / CLEC7A Protein (Fc Tag)