

Human CD48/SLAMF2 (His Tag) recombinant protein



Catalog Number: 503660

General Information

Gene Name Synonym:

B-lymphocyte activation marker BLAST-1; BCM1 surface antigen; Leukocyte antigen MEM-102; SLAM family member 2; Signaling lymphocytic activation molecule 2; TCT.1

Protein Construction:

A DNA sequence encoding the human CD48 (NP_001769.2) (Met 1-Ser 220) with a C-terminal polyhistidine tag was expressed.

Source: Human

Expression Host: Human Cells

QC Testing

Activity:

Measured by its binding ability in a functional ELISA. Immobilized human CD48 at 10 µg/ml (100 µl/well) can bind recombinant human 2B4 / CD244 with a linear range of 0.004-0.4 µg/ml.

Purity:

> 95 % as determined by SDS-PAGE

Endotoxin:

< 1.0 EU per µg of the protein as determined by the LAL method

Stability:

Samples are stable for up to twelve months from date of receipt at -70°C

Predicted N terminal:

Gln 27

Molecular Mass:

The secreted recombinant human CD48 comprises 205 amino acids with a predicted molecular mass of 23.8 kDa. As a result of glycosylation, rhCD48 migrates as an approximately 40 kDa band in SDS-PAGE under reducing conditions.

Formulation:

- Lyophilized from sterile PBS, pH 7.4
1. 5 % trehalose and mannitol are added as protectants before lyophilization.
 2. Please contact us for any concerns or special requirements.

Usage Guide

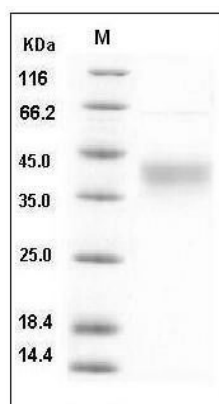
Storage:

Store it under sterile conditions at -20°C to -80°C. It is recommended that the protein be aliquoted for optimal storage. Avoid repeated freeze-thaw cycles.

Reconstitution:

Adding sterile water, prepare a stock solution of 0.25 mg/ml. Concentration is measured by UV-Vis.

SDS-PAGE:



Human CD48 / SLAMF2 / BCM1 Protein (His Tag)
SDS-PAGE