

General Information

Gene Name Synonym

Colony-stimulating factor; Molgramostin;
Sargramostim

Protein Construction

A DNA sequence encoding human GMCSF (NP_000749.2) (Ala18-Glu144) was expressed.

Organism

Human

Expression Host

Yeast

QC Testing

Activity

Measured in a cell proliferation assay using TF-1 human erythroleukemic cells.

The ED₅₀ for this effect is typically 0.1-0.6 ng/ml.

Purity

> 95 % as determined by SDS-PAGE

Endotoxin

Please contact us for more information.

Stability

Samples are stable for up to twelve months from date of receipt at -70°C

Predicted N terminal

Ala 18

Molecular Mass

The recombinant human GMCSF consists of 127 amino acids and predicts a molecular mass of 14.5 kDa. It migrates as an approximately 28-32 kDa band in SDS-PAGE under reducing conditions.

Formulation

Lyophilized from sterile PBS, pH 7.4.

1. 5 % trehalose and mannitol are added as protectants before lyophilization.

2. Please contact us for any concerns or special requirements.

Usage Guide

Storage

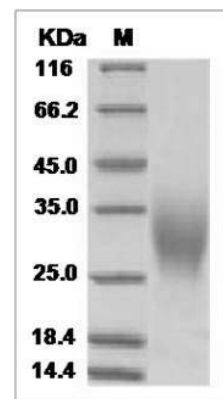
Store it under sterile conditions at -20°C to -80°C.

It is recommended that the protein be aliquoted for optimal storage. Avoid repeated freeze-thaw cycles.

Reconstitution

Adding sterile water, prepare a stock solution of 0.25 mg/ml. Concentration is measured by UV-Vis.

SDS-PAGE



Human GM-CSF / CSF2 Protein SDS-PAGE