

# Mouse LYVE1 / LYVE-1 (Fc Tag) recombinant protein



Catalog Number: 503627

## General Information

### Gene Name Synonym

Cell surface retention sequence-binding protein 1;  
Extracellular link domain-containing protein 1

### Protein Construction

A DNA sequence encoding the mouse LYVE1 (Q8BHC0) (Met1-Gly228) was expressed, fused with the Fc region of human IgG1 at the C-terminus.

### Organism

Mouse

### Expression Host

Human Cells

## QC Testing

### Purity

> 85 % as determined by SDS-PAGE

### Endotoxin

< 1.0 EU per  $\mu$ g of the protein as determined by the LAL method

### Stability

Samples are stable for up to twelve months from date of receipt at -70°C

### Predicted N terminal

Ala 24

### Molecular Mass

The recombinant mouse LYVE1 /Fc is a disulfide-

linked homodimer. The reduced monomer comprises 446 amino acids and has a predicted molecular mass of 49.1 kDa. The apparent molecular mass of the protein is approximately 63 kDa in SDS-PAGE under reducing conditions due to glycosylation.

### Formulation

Lyophilized from sterile PBS, pH 7.4

1. 5 % trehalose and mannitol are added as protectants before lyophilization.

2. Please contact us for any concerns or special requirements.

## Usage Guide

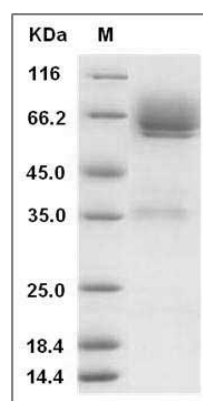
### Storage

Store it under sterile conditions at -20°C to -80°C. It is recommended that the protein be aliquoted for optimal storage. Avoid repeated freeze-thaw cycles.

### Reconstitution

Adding sterile water, prepare a stock solution of 0.25 mg/ml. Concentration is measured by UV-Vis.

### SDS-PAGE



Mouse LYVE1 / LYVE-1 Protein (Fc Tag) SDS-PAGE