

General Information

Gene Name Synonym

Leucine-rich repeat-containing protein 12

Protein Construction

A DNA sequence encoding the extracellular domain (Met 1-Ser 616) of human SLITRK1 (NP_443142.1) was expressed with a C-terminal polyhistidine tag.

Organism

Human

Expression Host

Human Cells

QC Testing

Purity

> 95 % as determined by SDS-PAGE

Endotoxin

< 1.0 EU per μg of the protein as determined by the LAL method

Stability

Samples are stable for up to twelve months from date of receipt at -70°C

Predicted N terminal

Asn 18

Molecular Mass

The recombinant human SLITRK1 consists of 610 amino acids and predicts a molecular mass of kDa. As a result of glycosylation, the apparent molecular mass of rhSLITRK1 is approximately 105-115 kDa in SDS-PAGE under reducing conditions.

Formulation

Lyophilized from sterile PBS, pH 7.4

1. 5 % trehalose and mannitol are added as protectants before lyophilization.

2. Please contact us for any concerns or special requirements.

Usage Guide

Storage

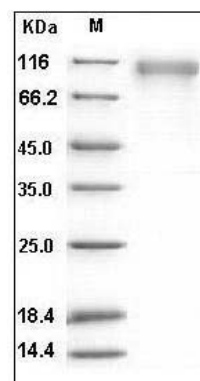
Store it under sterile conditions at -20°C to -80°C .

It is recommended that the protein be aliquoted for optimal storage. Avoid repeated freeze-thaw cycles.

Reconstitution

Adding sterile water, prepare a stock solution of 0.25 mg/ml. Concentration is measured by UV-Vis.

SDS-PAGE



Human SLITRK1 Protein (His Tag) SDS-PAGE