

Human Intestinal alkaline phosphatase (Fc Tag) recombinant protein



Catalog Number: 503592

General Information

Protein Construction

A DNA sequence encoding the mature form of human ALPI (P09923) (Met 1-Asp 503), without the pro peptide, was fused with a polyhistidine tag at the C-terminus.

Organism

Human

Expression Host

Human Cells

QC Testing

Activity

Measured by its ability to cleave a fluorogenic substrate, 4-Methylumbelliferyl phosphate (4-MUP).

The specific activity is > 10,000 pmoles/min/μg.

Purity

> 83 % as determined by SDS-PAGE

Endotoxin

< 1.0 EU per μg of the protein as determined by the LAL method

Stability

Samples are stable for up to twelve months from date of receipt at -70°C

Predicted N terminal

Val 20

Molecular Mass

The secreted recombinant human ALPI/Fc is a disulfide-linked homodimeric protein. The reduced monomer consists of 725 amino acids and has a predicted molecular mass of 79.5 kDa. The apparent molecular mass of rhALPI /Fc monomer is approximately 90-95 kDa in SDS-PAGE under reducing conditions due to glycosylation.

Formulation

Lyophilized from sterile PBS, pH 7.4

1. 5 % trehalose and mannitol are added as protectants before lyophilization.

2. Please contact us for any concerns or special requirements.

Usage Guide

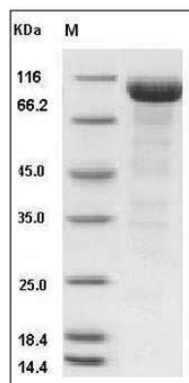
Storage

Store it under sterile conditions at -20°C to -80°C. It is recommended that the protein be aliquoted for optimal storage. Avoid repeated freeze-thaw cycles.

Reconstitution

Adding sterile water, prepare a stock solution of 0.25 mg/ml. Concentration is measured by UV-Vis.

SDS-PAGE



Human Alkaline Phosphatase / ALPI Protein (Fc Tag) SDS-PAGE